

Pre-K Breakfast in the Classroom



APRIL 2026
Orange Elementary School



Ralph C. Mahar Regional & School Union 73 Website

MONDAY

TUESDAY

WEDNESDAY

THURSDAY

FRIDAY



1

1oz. WG Reduced Sugar
Apple Cinnamon Cheerio Cereal
With
A Fresh Clementine
And
Skim or 1% White Milk

2

WG French Toast Sticks
With
A Peach Cup
And
Skim or 1% White Milk

3

A Strawberry Banana Smoothie
And
Skim or 1% White Milk

6

Cheddar Cheese Cubes
With
Fresh Apple Slices
And
Skim or 1% White Milk

7

WG Super Slice Loaf
With
ZeeZee's Applesauce Cup
And
Skim or 1% White Milk

8

1oz. GF WG Reduced Sugar
Cinnamon Chex Cereal
With
A Fresh Clementine
And
Skim or 1% White Milk

9

WG Waffle
With
Pear Cup
And
Skim or 1% White Milk

10

A 4oz. Danimal Yogurt
With
A Fresh Banana
And
Skim or 1% White Milk

13

1oz. WG Reduced Sugar
Cinnamon Toast Crunch Cereal
With
Fresh Apple Slices
And
Skim or 1% White Milk

14

Pork Sausage, Egg, & Cheddar
Jack Cheese rolled in a Crispy
WW Tortilla
With ZeeZee's Applesauce Cup
And
Skim or 1% White Milk

15

1oz. WG Reduced Sugar
Marshmallow Matey Cereal
With
A Fresh Clementine
And
Skim or 1% White Milk

16

WG Super Slice Loaf
With
A Strawberry Cup
And
Skim or 1% White Milk

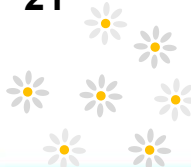
17

A Peach Smoothie
And
Skim or 1% White Milk

20



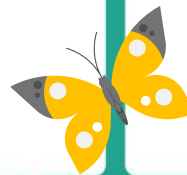
21



22



23



24



27

Cheddar Cheese Cubes
With
Fresh Apple Slices
And
Skim or 1% White Milk

28

WG Super Slice Lemon Loaf
With
ZeeZee's Applesauce Cup
And
Skim or 1% White Milk

29

1oz. WG Reduced Sugar
Trix Cereal
With
A Fresh Clementine
And
Skim or 1% White Milk

30

WG Pancakes
With
Mixed Fruit Cup
And
Skim or 1% White Milk



A USDA Pre-K Reimbursable Breakfast Includes...1 Milk, a Whole Grain Item or a Plant/Animal Based Protein & Fruit or Vegetable

Alternative Milk Choices such as Lactaid or Soy Milk are available to any student with a documented dietary need

If you have any questions or would like additional information, please contact kbressani@rcmahar.org

One Full Reimbursable Breakfast is Free to Each Student

A La Carte Items will be charged accordingly

Menu is Subject to Change

Manage Your Student's Account Online www.MySchoolBucks.com

This institution is an equal opportunity provider