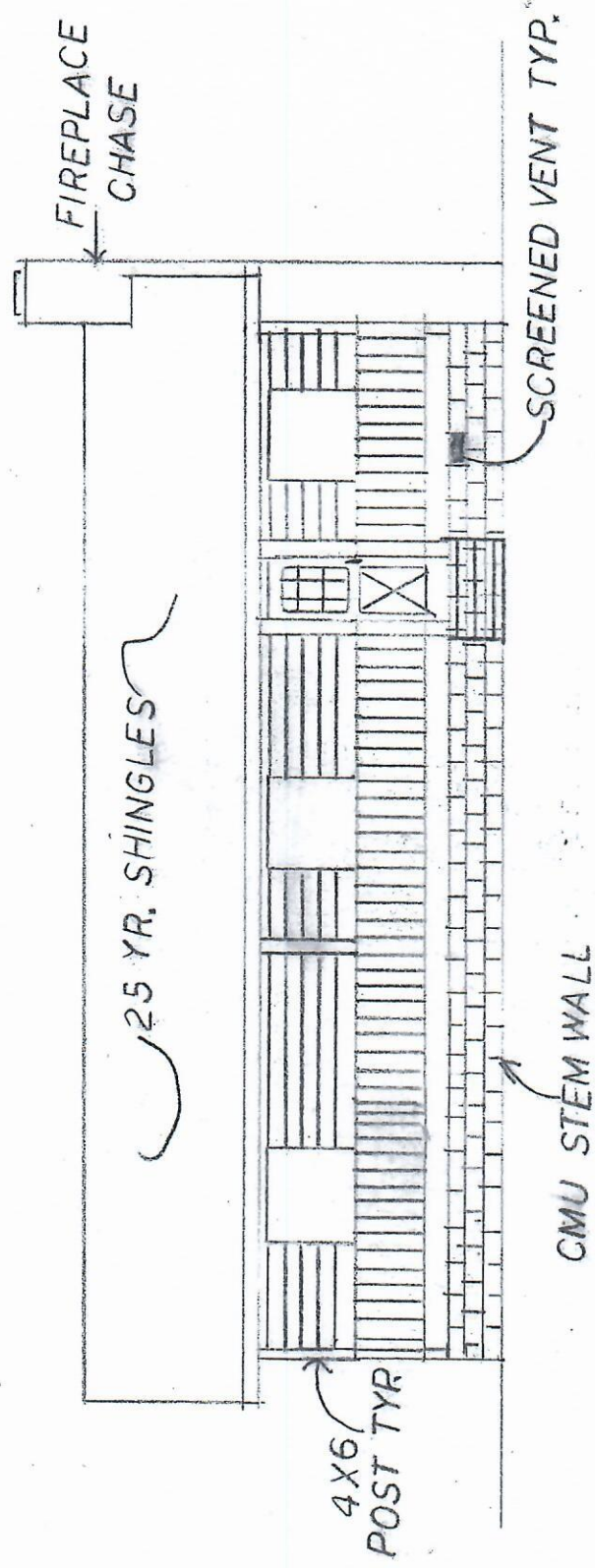


EXAMPLE ONLY



FRONT ELEVATION

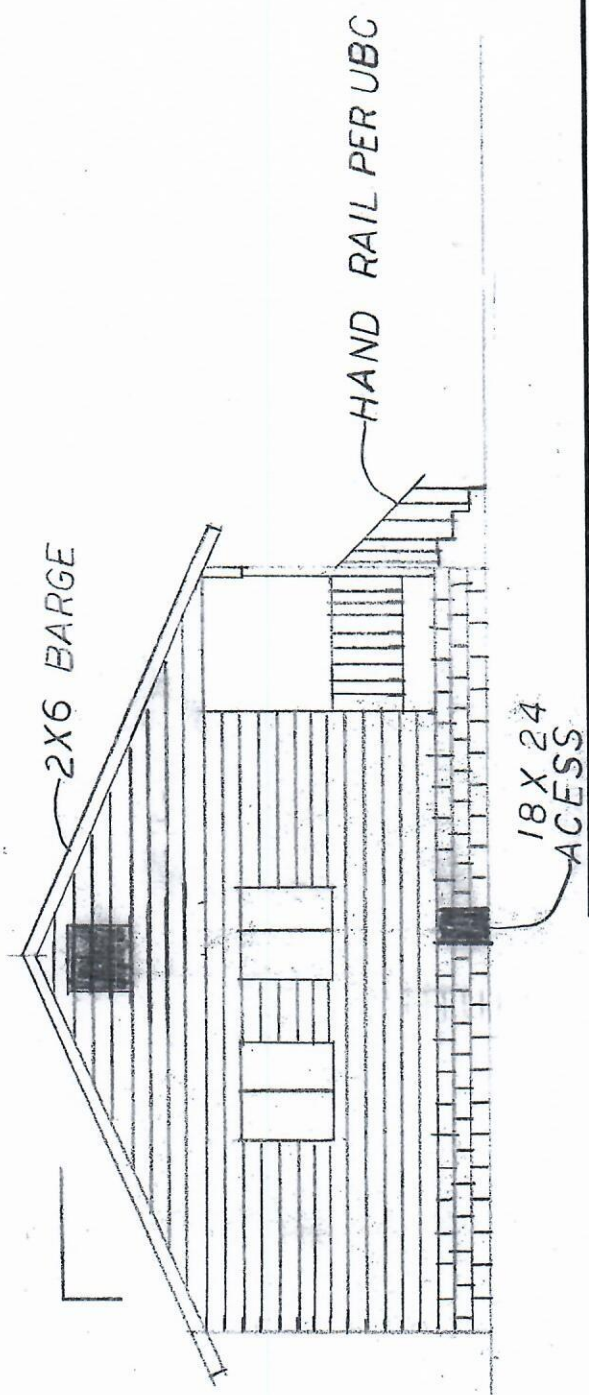
SCALE: NA
DATE:

APPROVED BY:
DRAWN BY: HR
REVISED:

APACHE COUNTY
BUILDING & SAFETY

DRAWING NUMBER

EXAMPLE ONLY



SIDE ELEVATION

APPROVED BY:	DRAWN BY HR
SCALE: NA	REVISED
DATE:	

APACHE COUNTY
BUILDING SAFETY

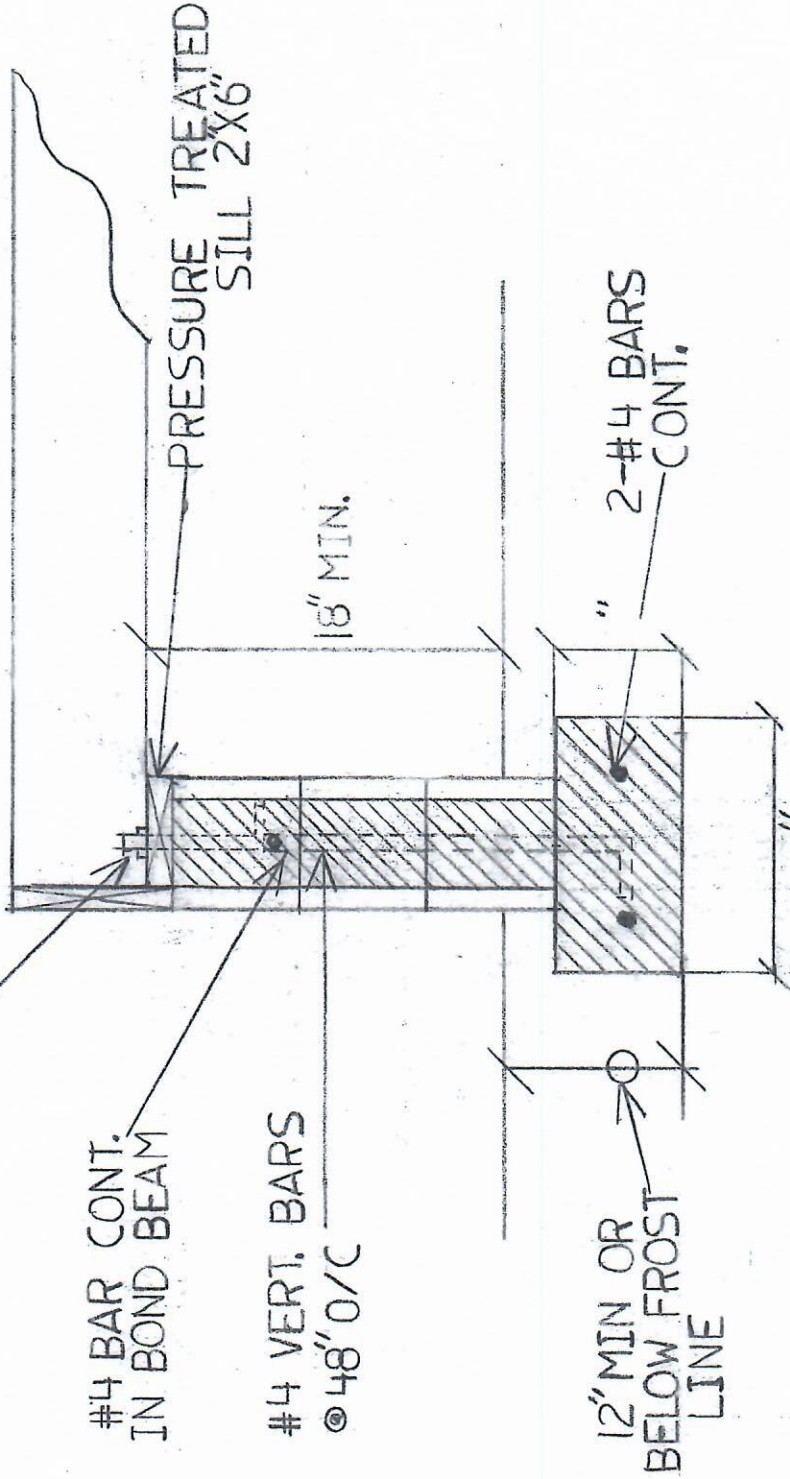
DRAWING NUMBER

EXAMPLE ONLY

1/2 X 12 AB @ O/C

#4 BAR CONT.
IN BOND BEAM

#4 VERT. BARS
@ 48" O/C



12" MIN OR
BELOW FROST
LINE

2-#4 BARS
CONT.

STEM WALL DETAIL

SCALE: 1" = 1'

APPROVED BY:

DRAWN BY HR

DATE:

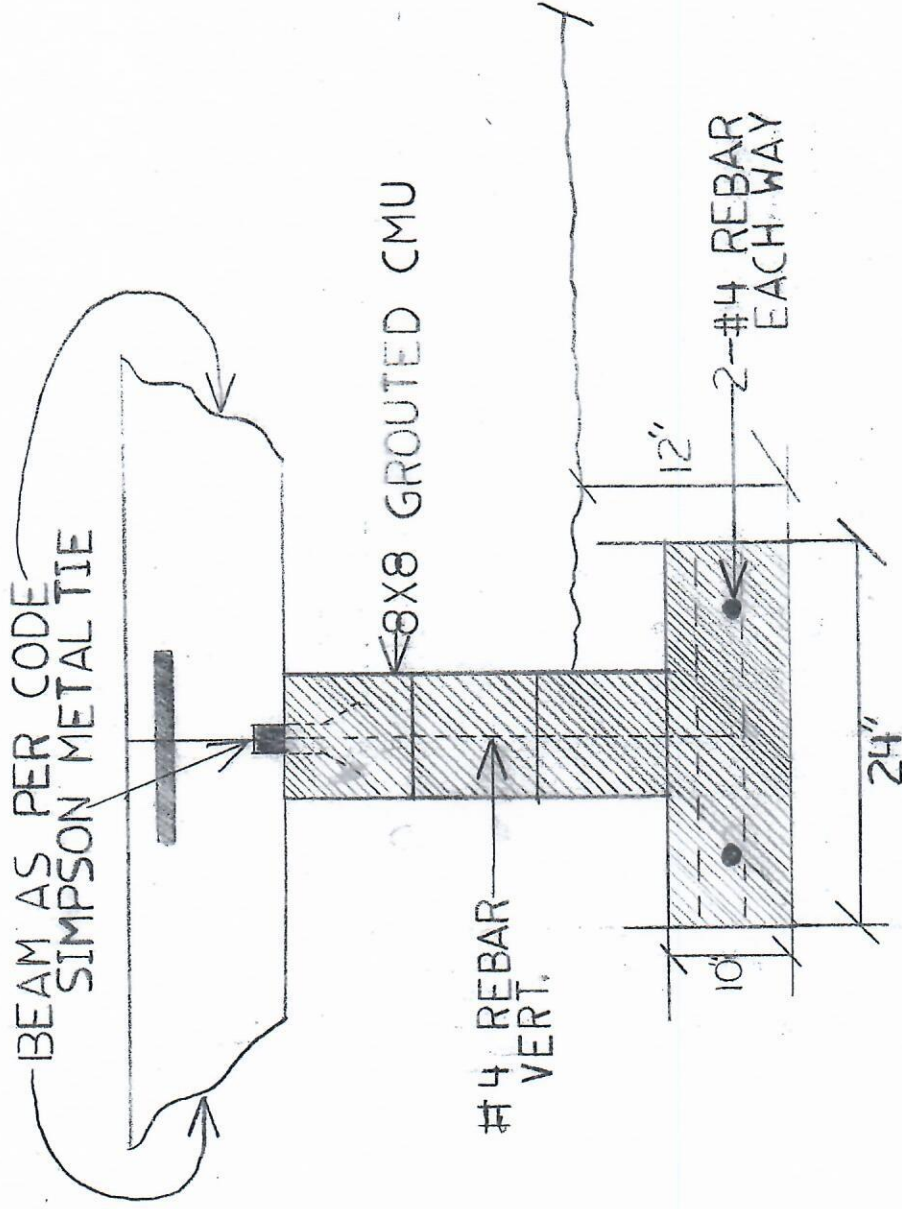
REVISED

APACHE COUNTY

BUILDING & SAFETY

DRAWING NUMBER

EXAMPLE ONLY



PIER DETAIL

SCALE: 1/2" = 1'

APPROVED BY:

DRAWN BY HR

DATE:

REVISED

APACHE COUNTY
BUILDING & SAFETY

DRAWING NUMBER

SHEATING
5/8 OSB

2x6
FASCIA

PRE-ENGINEERED TRUSSES AT 24" O/C

DBL. TOP PL.

SIMPSON H2.5 EACH TRUSS

2'x6" 16" O/C

SIDING

4x12
BEAM

SIMPSON
LU 26

2x12 24 O/C

PRESSURE TREATED SILL

4x6 POST

4x8
BEAM

CROSS-SECTION OF ROOF & PORCH

SCALE: N/A

APPROVED BY:

DRAWN BY HR

DATE:

REVISED

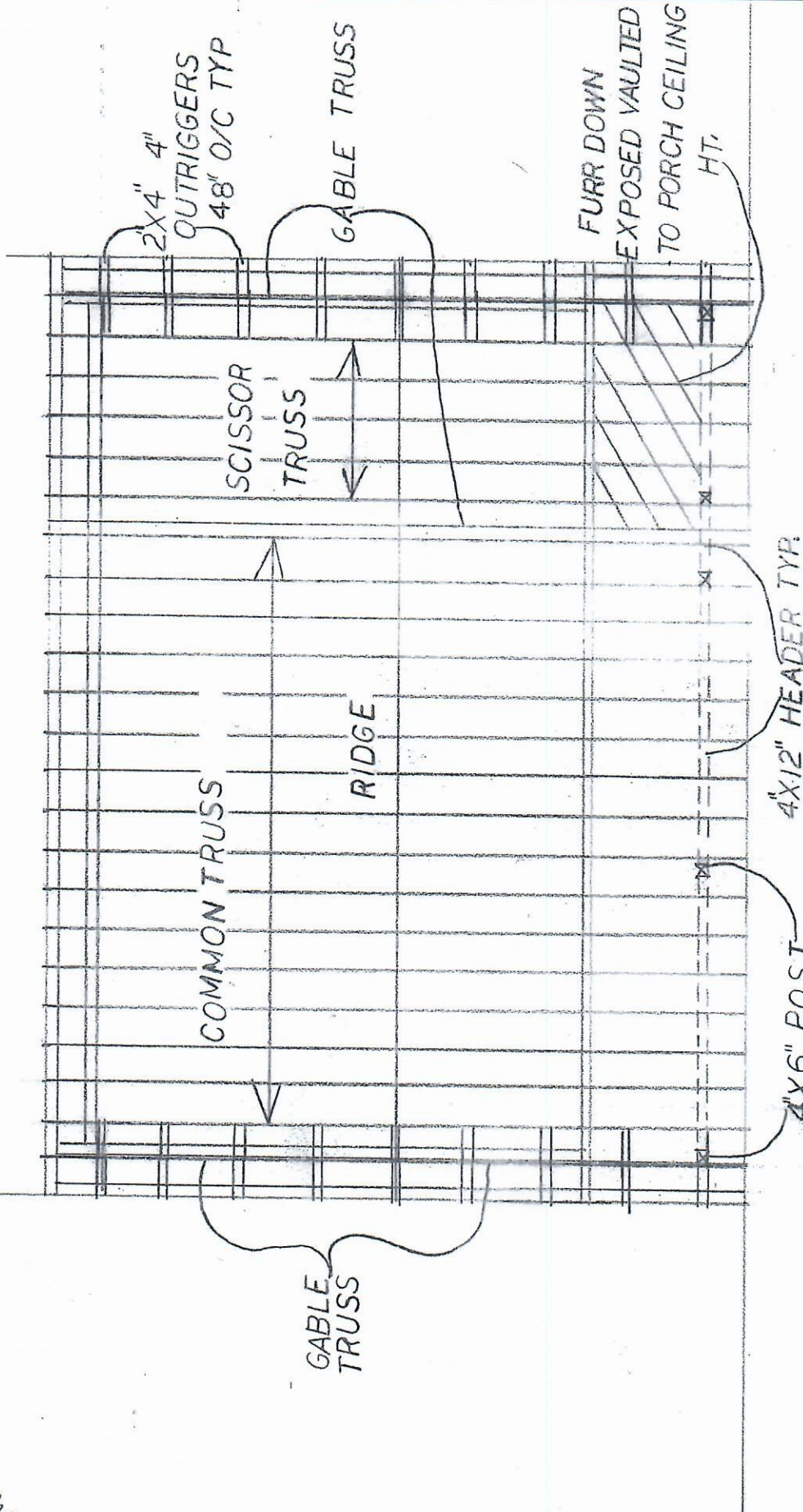
APACHE COUNTY

BUILDING & SAFETY

DRAWING NUMBER

EXAMPLE ONLY

EXAMPLE ONLY



ROOF FRAMING PLAN

APPROVED BY:	DRAWN BY HR
SCALE: 1/8"	REVISED
DATE:	

APACHE COUNTY
BUILDING & SAFETY

DRAWING NUMBER

